



The Commonwealth



# Faith in the Commonwealth

## Promoting Global Citizenship and Religious Literacy



### Snapshot

**132** young people have completed Youth Training of Trainers workshops

**370** social action initiatives are underway, involving

**9,162** community members from

**8** Commonwealth countries (Bangladesh; Guyana; Jamaica; Kenya; Trinidad and Tobago)

**100%** of workshop participants reported improved skills for dialogue and discussion

**97%** reported improved respect and understanding for people from different backgrounds

**99%** reported greater confidence in facilitating a group to achieve learning outcomes

Social action initiatives are promoting **interfaith and intercultural dialogue; peace-building and social cohesion; and global citizenship**

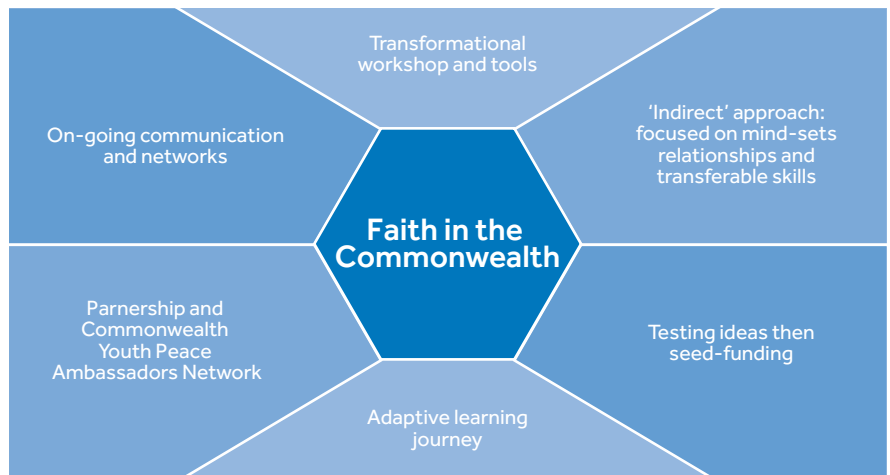
Faith in the Commonwealth is a joint initiative of the Commonwealth Secretariat and Khalili Foundation. It aims to build the ability and mind-set of young people to nurture improved relationships across communities, cultures and religions through global citizenship education. It does so through a global citizenship education toolkit (GCED Toolkit) delivered in partnership with Commonwealth universities; and through Youth Training of Trainers workshops targeting young community leaders.

The Faith in the Commonwealth Youth Training of Trainers programme collected evaluation data from workshop participants. Future evaluations will include additional information, such as satisfaction data from indirect beneficiaries.



### Programme Delivery

During the design and delivery of the pilot programme several core elements emerged as key to the Faith in the Commonwealth pilot approach. These are represented in the diagram below:



While workshop participants are expected to deliver social action initiatives in their communities, the programme delivery emphasised the importance of shifting mind-sets and values and nurturing relationships across difference to achieve greater respect and understanding of different perspectives, rather than simply supporting the design of faith-based social action projects. Enabling change through visible, direct interventions is important but the long-term impact of these interventions will be undermined if mind-sets and relationships have not shifted.

Participant data indicates a strong change in mind-set, capacity to develop relationships and confidence in creating new opportunities for respecting and understanding different perspectives.

The Commonwealth Secretariat delivers policy advocacy and technical support to its member countries for the development and implementation of strengthened education policies.

Faith in the Commonwealth links policy advocacy and practice, providing practical toolkits that can introduce formal and informal global citizenship learning into national youth and education policy frameworks.



## Discoveries

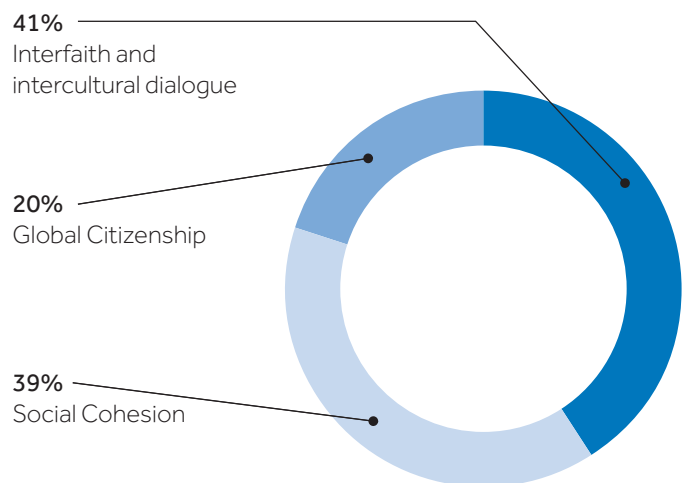
Data collected from participants indicates that the programme reached people at three levels:

**Primary engagement:** Faith in the Commonwealth workshop participants

**Secondary engagement:** Young people and stakeholders taking part in participant-led workshops and projects, and participants' organisations

**Wider engagement:** Attendees at public events, people accessing resources, social media followers, users of community services impacted by projects, etc.

Participants' social action initiatives can be categorised under three broad themes: interfaith and intercultural dialogue; social cohesion and peace-building; and global citizenship initiatives. The breakdown of these initiatives by category is shown in the pie chart.



The Commonwealth

For further information about the Faith in the Commonwealth project, please contact:  
Nasir Kazmi, Education Advisor, Commonwealth Secretariat  
n.kazmi@commonwealth.int

© Commonwealth Secretariat 2018

Views and opinions expressed in this publication are the responsibility of the authors and should in no way be attributed to the Commonwealth Secretariat.

Commonwealth Secretariat  
Marlborough House, Pall Mall, London SW1Y 5HX, United Kingdom  
Tel: +44 (0)20 7747 6500 Fax: +44 (0)20 7830 9081  
[www.thecommonwealth.org](http://www.thecommonwealth.org)



Printed on paper supplied from sustainable forest, as defined by the Forest Stewardship Council